

PRODUCT DATA SHEET

RCV2.5G27D-F7 - 3400 RPM

DESCRIPTION

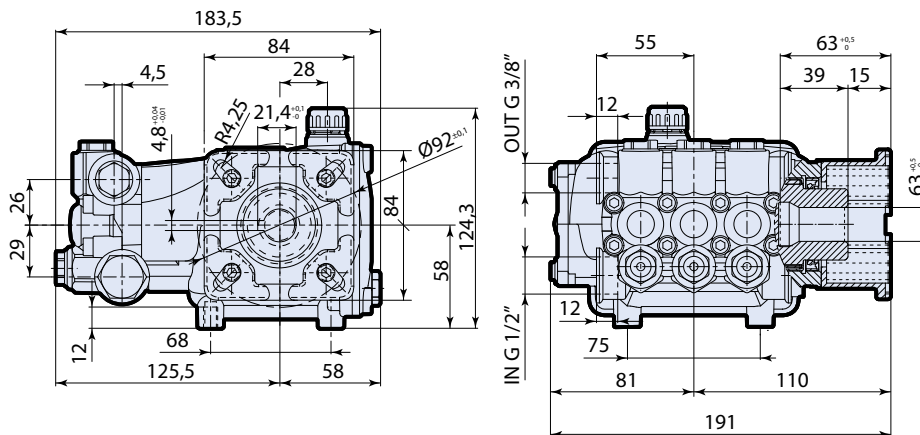


SPECIFICATIONS

MAX GPM 2.5
MAX PSI..... 2700
POWER EBHP 4.6
STROKE MM 5.6
MAX TEMP 140°
INLET THREAD 1/2" F

MAX LMP..... 9.5
MAX BAR 186
BORE DIA. MM..... 15
WEIGHT LBS..... 11
OIL CAPACITY..... 9.81oz
DISCHARGE THREAD 3/8" F

DIMENSIONS



Measurements are - mm

FEATURING

Manifold: High strength forged brass for long term use.

Bolts: Eight 6mm.

Plungers: NEW Ceramic Plungers, thicker wall to help prevent thermal shock.

Valves: Stainless Steel, valve seat o-ring is side mounted.

Seals: High quality high pressure seals. NEW low-pressure seal with a built in scraper.

Piston Guides: Two piece piston guides.

Drive End: NEW connecting rod with 12% more load surface. Large side cover sight glass, oversized bearing. Rear cover oil drain.

Crankshaft: Forged, precision ground.