

PRODUCT DATA SHEET

RCA3.5G16E-F8 - 1750 RPM

DESCRIPTION

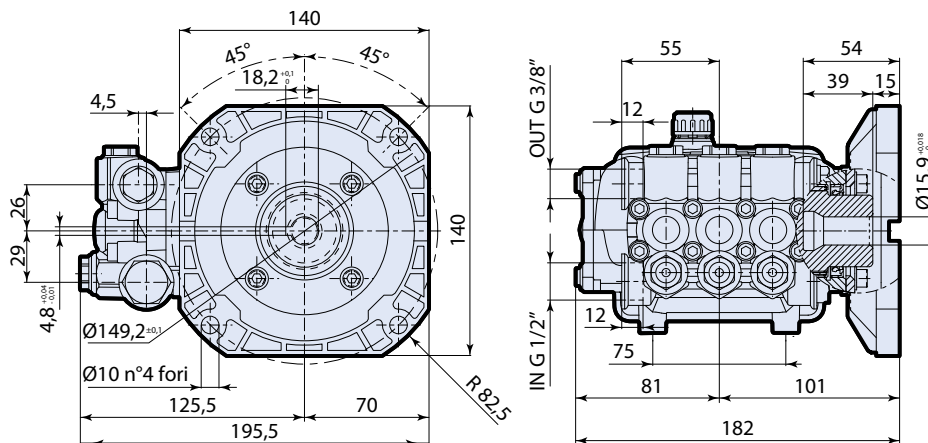


SPECIFICATIONS

MAX GPM 3.5
 MAX PSI..... 1600
 POWER EBHP 3.8
 STROKE MM 10
 MAX TEMP 140°
 INLET THREAD 1/2" F

MAX LMP..... 13.2
 MAX BAR 110
 BORE DIA. MM..... 18
 WEIGHT LBS..... 11
 OIL CAPACITY..... 9.81oz
 DISCHARGE THREAD 3/8" F

DIMENSIONS



Measurements are - mm

FEATURING

Manifold: High strength forged brass for long term use.

Bolts: Eight 6mm.

Plungers: NEW Ceramic Plungers, thicker wall to help prevent thermal shock.

Valves: Stainless Steel, valve seat o-ring is side mounted.

Seals: High quality high pressure seals. NEW low-pressure seal with a built in scraper.

Piston Guides: Two piece piston guides.

Drive End: NEW connecting rod with 12% more load surface. Large side cover sight glass, oversized bearing. Rear cover oil drain.

Crankshaft: Forged, precision ground.