

### DESCRIPTION

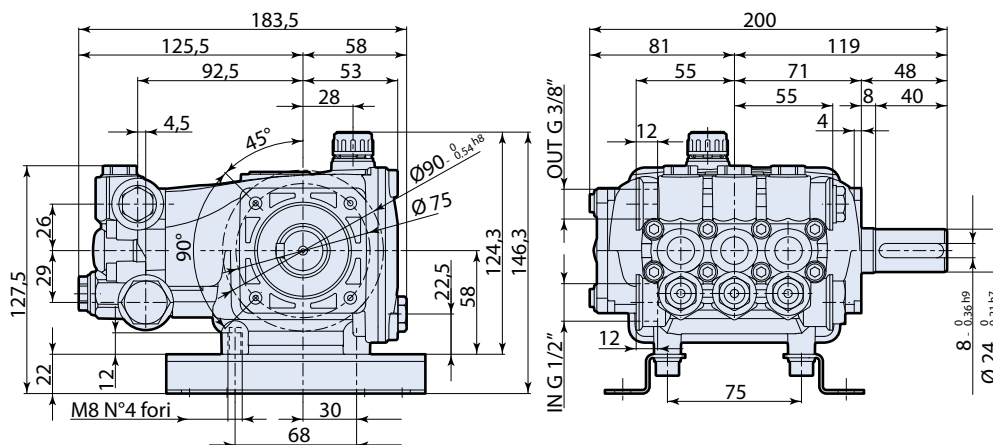


### SPECIFICATIONS

MAX GPM ..... 3.4  
 MAX PSI..... 2500  
 POWER EBHP ..... 5.8  
 STROKE MM ..... 12.2  
 MAX TEMP ..... 140°  
 INLET THREAD ..... 1/2" F

MAX LMP..... 13  
 MAX BAR ..... 170  
 BORE DIA. MM..... 18  
 WEIGHT LBS..... 10  
 OIL CAPACITY..... 9.81oz  
 DISCHARGE THREAD ..... 3/8" F

### DIMENSIONS



Measurements are - mm

### FEATURING

**Manifold:** High strength forged brass for long term use.

**Bolts:** Eight 6mm.

**Plungers:** NEW Ceramic Plungers, thicker wall to help prevent thermal shock.

**Valves:** Stainless Steel, valve seat o-ring is side mounted.

**Seals:** High quality high pressure seals. NEW low-pressure seal with a built in scraper.

**Piston Guides:** Two piece piston guides.

**Drive End:** NEW connecting rod with 12% more load surface. Large side cover sight glass, oversized bearing. Rear cover oil drain.

**Crankshaft:** Forged, precision ground.