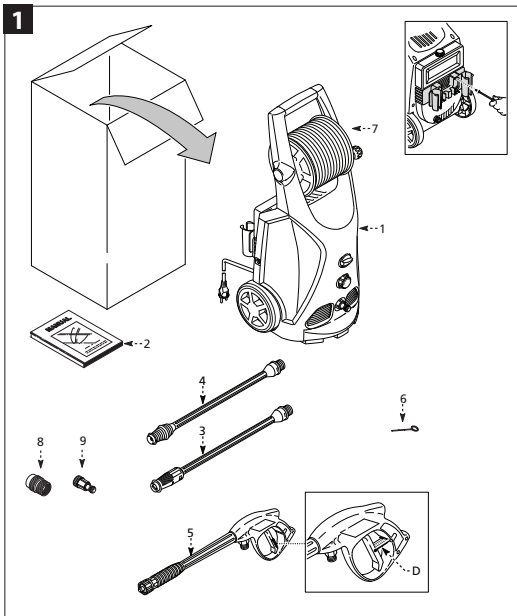
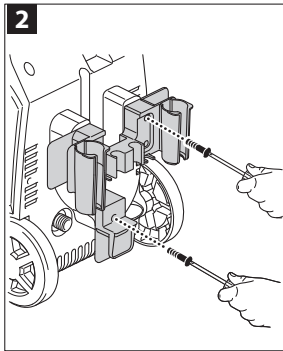


ASSEMBLY

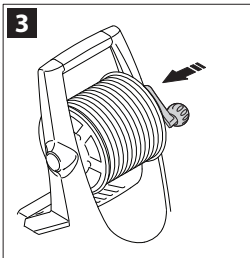


PACKAGE CONTENT:

1. Pressure Water Unit
2. Manual
3. Adjustable Spray Nozzle
4. Turbo Nozzle
5. Gun
6. Nozzle Cleaning Tool
7. High Pressure Hose
8. Garden Hose Adapter
9. Quick Connect Filter
- Gun Safety Button (D)

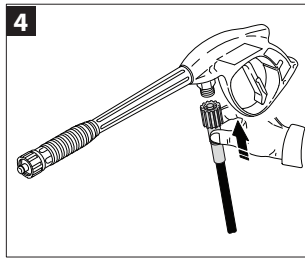


2. Install with supplied screws. Tools needed 1 phillips screwdriver.

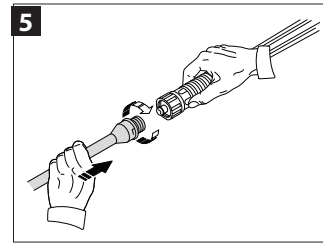


3. Press hose reel handle into place until you hear a snap.

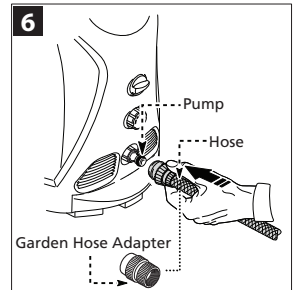
OPERATIONS



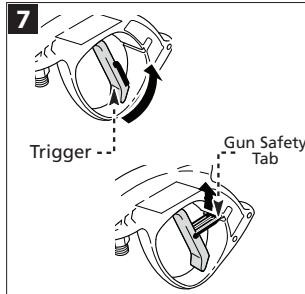
4. a) Remove shipping cap from gun.
b) Screw high pressure hose to gun.



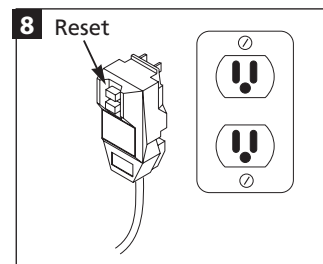
5. a) Insert lance into the gun by **turning** clockwise at the same time.
b) **Turn** counterclockwise to remove.



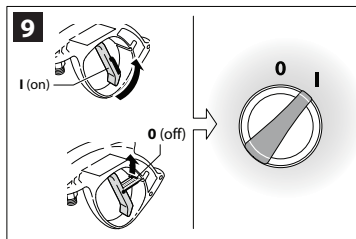
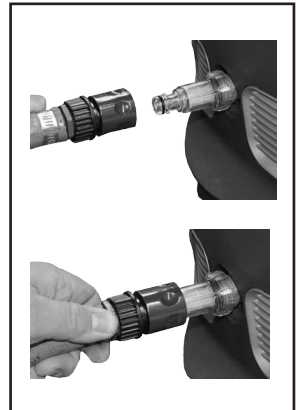
6. a) Remove shipping cap from front of pressure washer.
b) Attach Quick connect filter to front of washer.
c) Attach garden hose adapter to the garden hose.
d) Snap garden hose adapter and filter together.



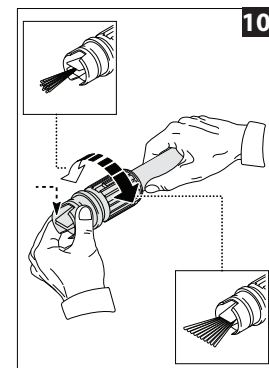
7. Activate the lock by holding the gun and push the lock from left to right. Squeeze trigger to make sure the trigger does not move. The safety trigger lock should be locked at all times when pressure washer is not in use.



8. a) Plug the power cord into a grounded 120V outlet and press the reset button as shown.
b) **THIS MUST BE DONE EACH TIME THE UNIT IS PLUGGED IN AN OUTLET.**

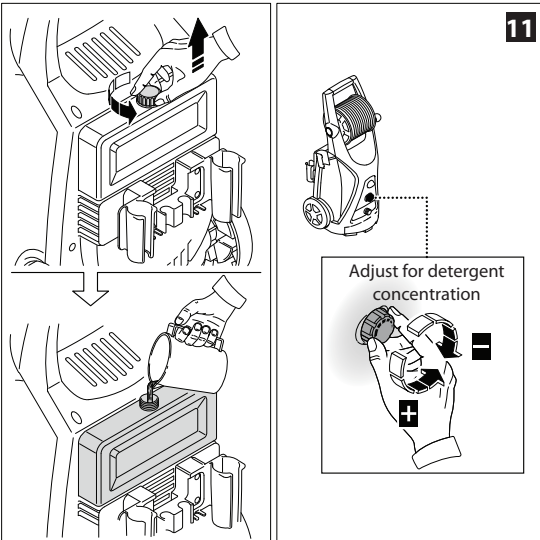


9. Pull trigger then turn on power switch located on front of the washer.



10. Spray pattern shape and intensity can be changed by twisting the spray adjuster at the end of the lance. **KEEP HANDS CLEAR OF THE FRONT OF THE LANCE TO PREVENT INJURY.** NOTE: Turbo nozzle is not adjustable.

OPERATIONS CONTINUED

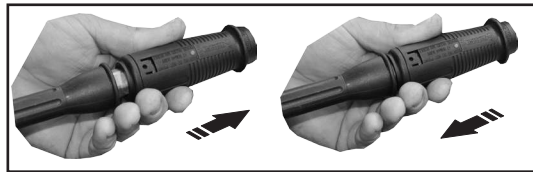


11. a) Adjust detergent knob to desired setting.

b) Switch lance from High Pressure setting to Low Pressure setting by pulling nozzle away from you.

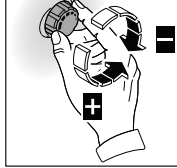
c) Switch lance back to High Pressure by pulling nozzle towards you for high pressure wash and rinse.

d) The use of detergents can dramatically reduce cleaning time and assist in the removal of difficult stains. Some detergents have been customized for pressure washer use on specific cleaning tasks. These detergents are approximately as thick as water. *NOTE: The use of thicker detergents, such as dish soap, will clog the chemical injection system and prevent the application of the detergent.*

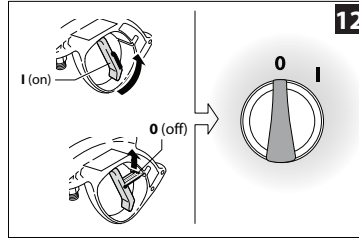


11

Adjust for detergent concentration



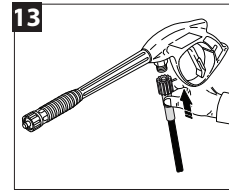
UNIT STORAGE



12. a) Pull trigger then turn off power switch located on back of pressure washer.

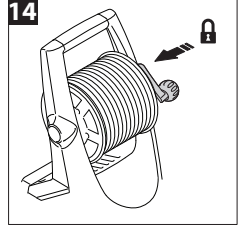
b) After turning off power, pull trigger to relieve line pressure before removing spray gun and hose.

13

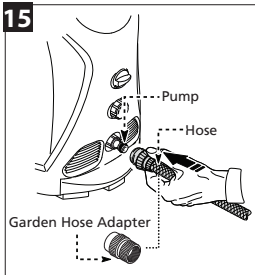


13. Remove high pressure hose from gun and pressure washer.

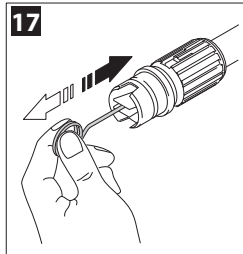
14



14. Roll up high pressure hose. Lock handle.



15. Disconnect garden hose. Remove garden hose adapter (optional).



17. a) Turn off the unit
b) Turn off the water supply. Relieve any pressure trapped in the hose by squeezing the trigger 2 - 3 times.

c) Separate lance from gun.

d) Rotate nozzle to the narrow stream setting. This opens up the fan blades.

e) Using the included tip cleaner, or any un-folded paper clip, insert wire into the nozzle hole and move back and forth until debris is dislodged.

f) Remove additional debris by back-flushing water through the nozzle. To do this, place end of a garden hose (with water running) to tip of nozzle pushing water and debris out the back opening of the lance.

16



16. a) Wrap power cord around accessories holder in slots provided on sides and bottom.
b) Place gun and lance into side slots.